



EAFA NEWS

FEBRUARY 2022

TABLE OF CONTENTS

Announcements

EAFA Board of Directors

From Our President

Featured Artist

Corrections

Kudos Corner

Public Art Program

Classes

For Sale

EAFA Website

ANNOUNCEMENTS

DUE TO COVID WE HAVE NO MEETINGS SCHEDULED UNTIL FURTHER
NOTICE!

EAFA ONLINE WINTER PUBLIC ART VENUE SHOW
January 1st through March 31st 2022

Kirkland Cultural Art Commission Call to Artists: Mural Art Submission deadline: February 8, 2022 at 5 pm PST

The Kirkland Cultural Arts Commission (KCAC) seeks proposals for an outdoor mural project. The project should embody the principles of the City's Resolution 5240 and Resolution 5434, which express the City's commitment to diversity, equity, inclusion, and belonging. The selected artist should plan to install the mural during April-May 2022.

The KCAC proposes that artists consider the [NE 68th Street underpass](#) crossing under the Cross Kirkland Corridor between 104th Avenue NE and 106th Avenue NE as the mural installation site. Artists are welcome to suggest alternative locations, subject to approval by the City and other stakeholders.

For more information and to submit a proposal, visit our website [HERE](#) or visit www.kirklandwa.gov/home and search "Call to Artists: Mural Art"

Martha Chaudhry
Special Projects, Economic Development
City Manager's Office
mchaudhry@kirklandwa.gov
(425) 587-3266 (work)
(425) 499-2765 (cell)

EAFA 2022 BOARD OF DIRECTORS

President Jean Beuoy jeanprattbeuoy@yahoo.com
Vice President OPEN POSITION
Secretary Jane Garrison jane.garrison@comcast.net
Treasurer Charles Fawcett charles@charlesfawcett.com
Grants Chair Joy Hagen joy_hagen@yahoo.com
Public Art Chair Laura Grover bzak56@aol.com
Webmaster Jeannie Boag wordcolors@earthlink.net

Newsletter Editor Linda Harris johlin5@comcast.net
Publicity Chair Patricia McCoy pmccoy33@msn.com
Membership Chair Gayle Erxleben grerxleben@gmail.com
Venue Chair Donna Cutler donna@bfbpgroup.com
Hospitality Chair Adrienne Anderson Smith adriennemas@artbyadrienne.com
Signature Fund, Education Chair Cheryl Hoople choople@hotmail.com
Audio/Video Tech Eve Worrell elworrell@gmail.com
Video Rental Sheila Supplee sheilann24@comcast.net
Plein Air Chair *OPEN POSITION*
Art Sales Manager Deanna Morgan deannaeafa@gmail.com 206-940-9405

FROM OUR PRESIDENT

Here we go again - our monthly general meeting for February has been cancelled. We will try again in March! Hopefully by then the Covid case numbers will be down. Your board of directors really needs to hear from you regarding your concerns about participating in indoor gatherings, and we would like to know how many attendees to expect at our next meeting. Email me "jeanprattbeuoy@yahoo.com". EAFA will follow all existing social distancing, mask and vaccination mandates when we do meet again.

GOOD NEWS: Our members have been invited to exhibit at University House in Issaquah again! The exhibit dates are September 2022 to January 2023. The 62 paintings will be chosen by ERA's curator, Anna McCrae. You will be receiving all the entry information soon. This is a very nice venue, well attended by residents and visitors. There will not be a public reception due to Covid, but awards will be given by University House. They are looking forward to our participation. We are fortunate to have this opportunity to exhibit.

As some of you know, I've been teaching watercolor, oil and acrylic painting and drawing for over thirty years. The most common comment I hear from my students is "I wish I could paint looser". I decided to add a class "painting loose in watercolor". After careful analysis, I have determined that "looser" doesn't happen by painting faster, or without planning ahead! Even Arches paper at about \$8.60 can only take so much

lifting, and overworking before it succumbs to our abuse. Suggestions: simplify some of the shapes, have large amounts of colors already mixed, colors you like, not just the colors in the photo, use large brushes to minimize brush strokes, think about design principles - using lines, shapes and values from your imagination for background fill and to break up the subject, glaze over dry areas with more color for emphasis and balance, and leave a little white - it really is ok. If you try any of these suggestions, please let me know, I'd love a picture of your work!

We are still looking for someone to fill our open Vice President Position. Just give me a call or e-mail if you are interested. Our board meetings are a real treat! Today we held our meeting at a park - masked, gloved, bundled up and shivering to fend off frost bite - we know how to have a good time!

Jean Beuoy jeanprattbeuoy@yahoo.com

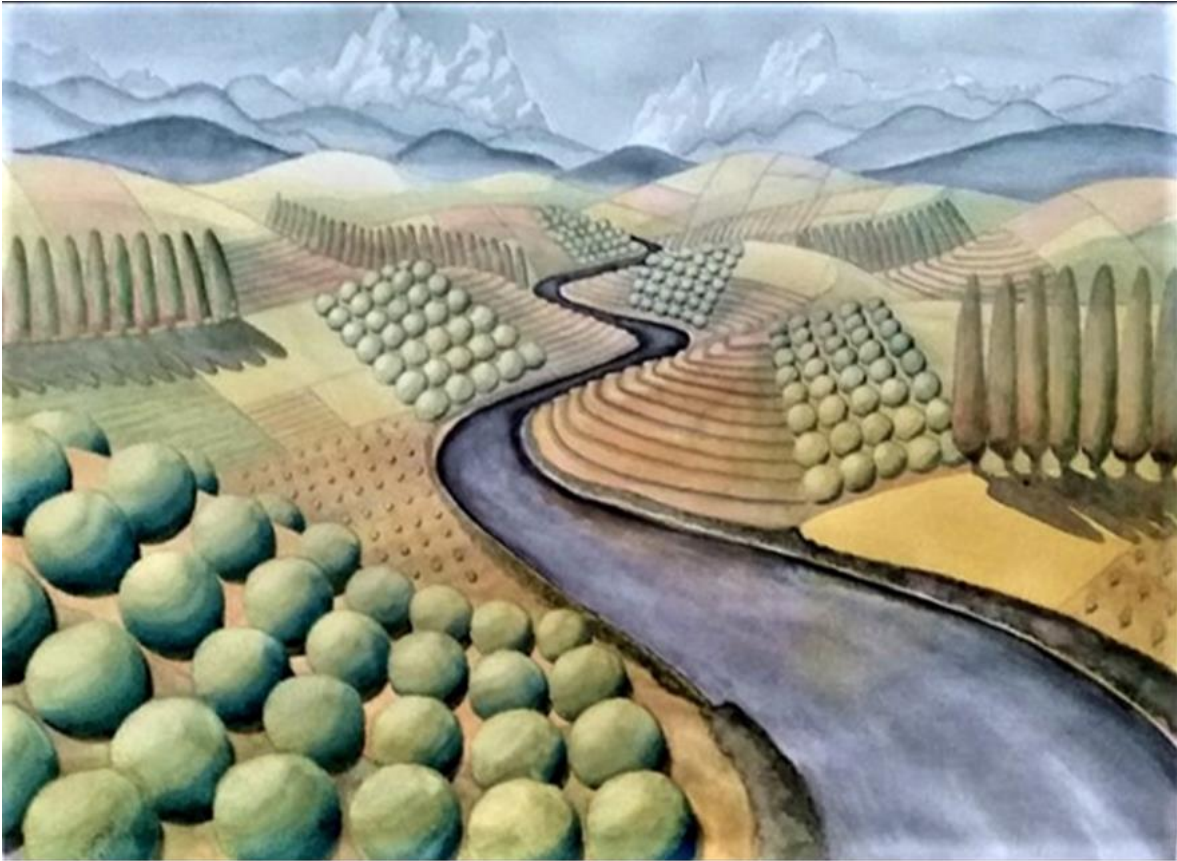
FEATURED ARTIST

JANE GARISON

When I was in high school, I told my parents I wanted to be an artist. They said it was a bad idea, because I couldn't make a living at it. So, I became a landscape architect. I enjoyed the drawing part only. Confronting planning commissions and developers was not fun. Interpreting zoning codes was tedious and not my interest, but I did it. In the late 1980s, Autocad swept in and wiped away all hand drawing. From then on, art was an aspiration only. After 49.5 years in Landscape Architecture and Planning, I just had to retire. I could not make 50. I got out my paints and started in on the many subjects I had known and thought about. Art has been my salvation. When my husband died in 2017, painting kept me company. When my sweet cat died in 2020, I could paint and get by. Then along



came Covid, and I could paint and forget about how lonely I felt. I don't make money at art, but it provides me with so much more. Mom and Dad were right about the money, but I'm glad I had the challenges, because they gave me something to paint.



IMPRINTS OF THE WENATCHEE VALLEY



IS ANYBODY HOME

OUR HISTORY

In 1975, EAFA was founded by six local artists: Miriam Lansdon, Deanna Morgan, Sibylle Pearsall, Joy Iverson, Margaret Dragseth and Jean Ryan. The early meetings were attended by an average of 25 people. In 1976 the first exhibition was held at Bellevue Community College. Originally called The Eastside Association of Fine Arts, EAFA, now The Evergreen Association of Fine Arts, is a volunteer-managed, non-profit visual arts organization that has served artists and communities in the Puget Sound region since its inception.

Eafa received its 501(c)3 non-profit status from the Federal Internal Revenue Service in 1997. Its membership has increased from its original six local founding artists to over 200 amateur and professional painters, photographers, and sculptors. Its annual program of exhibitions, monthly demonstrations, lectures, and public art displays at regional hospitals, libraries, and community gathering places has continued and grown.

Eafa is governed by a Board of Directors, elected from the members, and many other volunteers who take on program responsibilities, including exhibition chairs, newsletter editors, program chairs, volunteer coordinators, Public Art committee chairs, social media editors, and more.

The Eafa Bylaws contain the specific rules under which Eafa operates. To read a pdf copy of the bylaws, click [Eafa Bylaws](#).

KUDOS CORNER

Please feel free to share your sales to help encourage other members to keep painting! You can send your info to Linda

Harris johlin5@comcast.net.



[Jodie Sarah Masiwchuk](#)

Jodie sold this painting, "Saguaro Sunset" that was hanging on the wall at @homeward_pet over the holidays, which means I was able to donate 50% of the proceeds back to Homeward Pet. I'm so fortunate to have customers that allow for me to give back to charities in this way.



[Lisa DeBaets](#)

I got another award on my painting. I'm so honored and beyond excited!

Congratulations! Your painting, "In Your Presence", was an award winner in the December 2021 BoldBrush Painting competition.

"In Your Presence" was awarded the honor 2nd Place - Abstract by Juror Brian Blood.

You may view your winning entry, along with the other winning paintings at:

<http://faso.com/boldbrush/winners/263>

PUBLIC ART PROGRAM

Public Artwork includes collage, abstract and representational art in a variety of media and subjects. We welcome new members into our public art program all year around. To join you must be a member of EAFA and have your 2022 membership fees paid.

Public Art Members are much appreciated and I want to thank all of them for being part of this group. To learn more on how to join, **go to our EAFA webpage at <https://eafa.org/public-art/how-to-join/>** , or **contact Laura Grover at bzak56@aol.com or phone: 425-753-4550.**

If anyone is interested in becoming an EAFA Public Art Manager or joining the EAFA Public Art Group **please contact Laura Grover at bzak56@aol.com or phone: 425-753-4550.**

VENUES

**Public Art Venue Manager wanted—Overlake Medical Center
Cardiology**

Public Art Venue Manager wanted—Overlake Medical Center Oncology

**Public Art Venue Manager —Overlake Medical Center PACCAR
Educational/Conference Ctr.**

*Managers will be required to complete the Overlake Medical Center
Volunteer Orientation.*

Managers call for artwork from the Public Art community. Take down and return existing show to artists. Hand and label each show. This can take from one to two hours.

Managers will supply a inventory list to Overlake Hospital Healing Arts coordinator, EAFA Public Art Coordinator and Sales representative.

EAFA Online Public Art Venue

Managers: Roger Baker and Charles Fawcett

January 1, 2022 Though March 31, 2022

Jingjing Ma, Lewis LaBrashe, Joy Hagen, Kiraya Kestin, Magali Lanarczak, Irene Joblonski, Lyla Jacobsen, Dianne Hofbeck, Terri Gordon, Farida Hakim, Dolores Marquez, Debbie Howard, Ellen Grove, Diana Grant

Overlake Medical Center Cardiology

Managers: Dolores Marquez and Laura Grover

September 26, 2021 Through February 2022

Dolores Marquez, Gill McKinstry, Jodie Sarah Masiwchuk, Ann Reynolds, Carol Ross, Shirley Rudolf, Ruth Russell, Jane Scott

Overlake Medical Center Neonatal W2 Floor

Managers: Diana Grant

December 5, Though March 6, 2022

Lewis LaBrashe

Overlake Medical Center Oncology

Manager: Dolores Marquez and Laura Grover

October 10, Through February 2022

Lisa DeBaets, Teresa D'Ambrosio, Gayle Erxleben, Diana Grant

PACCAR Educational Center

Managers: Dolores Marquez and Laura Grover

February 13, to May 1, 2022

Jannelle Loewen

Bellevue Regional Library

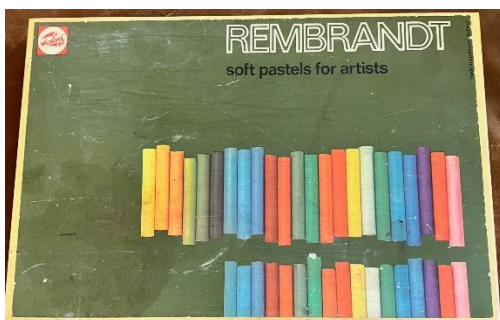
Managers: Mami Shimomura and Ann Reynolds

February 2022 to April 2022

Mami Shimomura

FOR SALE

I have a wooden boxed set of 180 Rembrandt Soft Pastels that are barely used. I will sell them for half of their current market value. Please contact me at johlin5@comcast.net if interested.



CLASSES

Please send info about any classes you teach to Linda Harris johlin5@comcast.net if you wish to have them included in the monthly newsletter.

EAFA WEBSITE

[HTTP://WWW.EAFA.ORG](http://www.eafa.org)
Jeannie Boag, Webmaster

As always, if you have any questions or suggestions to make EAFA better or ideas that would help you in any way, please feel free to give me a call or an email.

Jean Beuoy jeanprattbeuoy@yahoo.com 425-503-3733



Thank you to 4Culture and the City of Bellevue for your continuing support.

