

EAFa NEWS

SEPTEMBER 2019



TABLE OF CONTENTS

September Demonstrator
From Our President
Public Art Program

MEETINGS

Westminster Chapel
13646 NE 24th St
Bellevue, WA
Every third Thursday
Time 1:30 - 3:00 PM

ARTIST DEMONSTRATOR ~ SEPTEMBER

Steve Whitney



Like most painters who are serious and passionate about their work, I paint what personally fascinates me. Sometimes that is a still life, portrait, or figure, but most often it is a landscape. I consider myself a painterly realist, meaning that I try to be faithful to visual reality while making it clear through vigorous brushwork, lively color, and disregard of precise detail that what you're looking at is a painting, not a photograph.

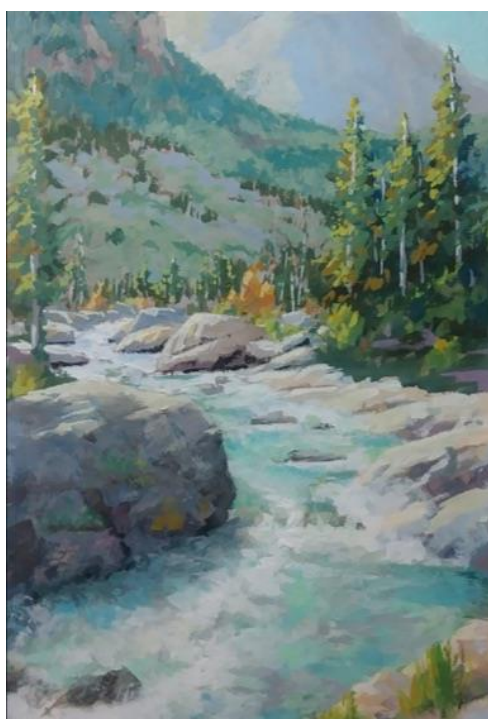
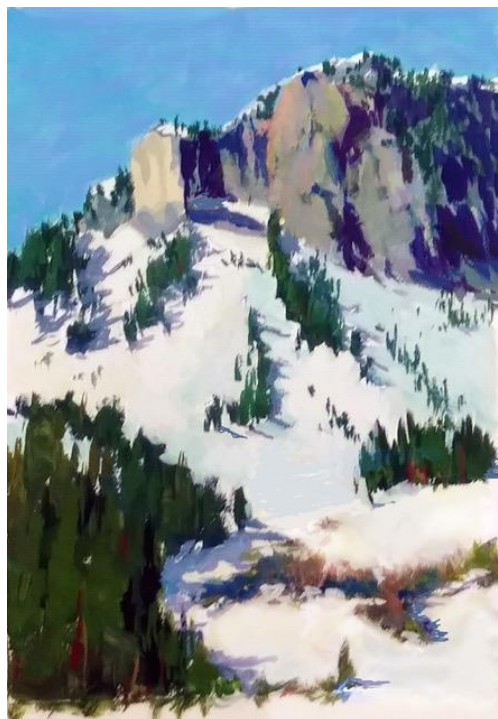
My *plein air* (outdoor) paintings are typically done in two to three hours and tend to be looser and more impressionistic than my studio work. Studio paintings, which can take, days, weeks, or months, provide an opportunity for a more nuanced, carefully considered response to a scene.

I am a signature member of Puget Sound Painters and the Northwest Watercolor Society. My paintings in oil, acrylic, and watercolor have been juried into prestigious national shows. When I paint, I forget everything else, including when to break for lunch or keep an appointment. When I am in the proverbial “zone”, painting seems easy, and every stroke foreordained. But when I am not in the zone, which is often, painting is difficult and frequently frustrating. Friends often think it must be fun to be an artist. That’s not how I experience it. When it’s going well, it’s far more profound than mere fun; when it’s not, it’s not fun at all. I paint because I can’t imagine not painting. It is at once a form of meditation and an utter, complete personal engagement with the world. Aside from the love and comfort of family and friends, nothing else makes me feel so whole or so completely myself.

My website: www.stevewhy.com

My email: steverwhitney@gmail.com

My phone: 425-485-6446



FROM OUR PRESIDENT

What a perfect summer we have had, beautiful weather, fabulous Plein Air outings, vacations, time for family and friends, etc...

Now, get ready for a incredible year with EAFA and everything EAFA shares with all of its members and friends.

ART RUMMAGE SALE!!!

WOW - Our best Art Sale EVER!!!

Our wonderful EAFA Members really outdid themselves.

Total Income - \$866.78

Sales - \$559.88

Donations - 306.90

Congratulations to everyone and we will let you know who will benefit from your generosity.

EAFA'S WEBSITE

Have you checked out our new website? Jeannie Boag has really done a fabulous work of art for EAFA.

KUDOS

Congratulations to Ann Reynolds who sold two paintings at the Bellevue Library.

Also, congratulations to Dawn Dufford who sold a painting at the Bellevue Library.

PLEIN AIR

I have had so many people tell me how wonderful the Plein Air program is, great places, great paintings and special time with other artists.

A huge thank you to Betty Rollefson, our Plein Air Chairperson for doing such a great job!

HELP HELP HELP HELP HELP

At our May meeting, a wonderful person volunteered to be our Secretary. I remember talking to her and she said that she lived in Seattle. I cannot find her information anywhere. If this person is you, please give Deanna a call.

PUBLIC ART PROGRAM

Many people have asked me how to join the Public Art Program and now I have the best way to share that information.

The information is now on our WONDERFUL new website.

CRITIQUE GROUP

Bring paintings that you would like Jean Beuoy to comment on or make suggestions. Or you can just sit in and learn. This has been a great success for our group meetings!

PUBLIC ART UPDATES FOR SEPTEMBER 2019

The Public Art Program is a volunteer interest group within EAFA. The program provides appreciation and enjoyment of art to public and private audiences. It also gives opportunities to participating artists to exhibit and sell their artwork at several public and private venues.

Our participant's works include collage, abstract and representational art in a variety of media and subjects. We welcome new members into our public art program as we are always looking for new venues. Our Public Art Members are much appreciated and I want to thank all of them for being part of this group.

From August to October 2019 Jean Pratt Beuoy is exhibiting a Series of her Safari paintings at the PACAAR Educational Center.

If anyone has a large body of work in a series and would like to show it please let me know.

Welcome Lydia Ho as a co-manager to Overlake Hospital. You will find Lydia on 4th floor West in Oncology. We are in need of a co-manager for the North Bellevue Community Center, 4063 148thAve NE, Bellevue. We are also in need of a co-manager for the Department of Ecology, 3190 160thAve SE, Bellevue WA. If anyone is interested in becoming

an EAFA Public Art Manager or joining the EAFA Public Art Group **please contact Laura Grover** at **bzak56@aol.com** or **phone: 425-753-4550**.

Bellevue Regional Library

Managers: Ann Reynolds and Mami Shimomura

August 31, to November 2, 2019

Camea Davidson

Overlake Hospital Cardiology

Managers: Gayle Erxleben and Deby Alm

August 18, to November 17, 2019

Teri Gordon, Diana Grant, Farida Hakim, Ruth Russell, Linda Harris, Magali Lemarczak, Deby Alm

Overlake Hospital Neonatal W2 Floor

Managers: Diana Grant

June 16, to September 16, 2019

Larey McDaniels

September 16, to October 21, 2019

Diana Grant

Overlake Oncology

Manager: Bev Birmele and Lydia Ho

August 25, to November 17, 2019

Shirley Rudolf, Heidi LaCourse, Pushpa Agrawal, Olga Bolgar

PACCAR Educational Center

Managers: Lisa DeBaets

July 28, to November 3, 2019

Jean Pratt Beuoy

Newcastle Library

Manager: Sharon Pfister

No Library Events thru September 28.

September 28, to November 30, 2019

Gale Baker **Overlake Hospital South Tower**

Managers: Roger Baker and Charles Fawcett

July 14, to October 19, 2019

Jannelle Loewen, Diana Grant, Eve Worrell

North Bellevue Community Center

Manager: Gill Mckinstry

July 24, to October 19, 2019

Dolores Marquez, Gill McKinstry, Roger Baker, Ruth Russell, Linda Harris, Pushpa Agrawal, Laura Grover, Deb Ferguson

Mercer Slough Environmental Center

Manager: Cheryl Hoople

July 11, to Oct 10, 2019

Steve Whitney

Department of Ecology

Manager: Dolores Marquez

July 11, to October 10, 2019

Adrienne Anderson Smith, Eve Worrell, Gayle Erxleben, Linda Harris, Magalli Lenarczak, Nilia Fajardo, Patricia McCoy, Ruth Russell, Teri Gordon, Dolores Marquez

North Shore Unitarian Church

Managers: Barbara Van Dyke Shuman

There are no EAFA Public Art exhibits at this location through September 2019.

As always, if you have any questions or suggestions to make EAFA better or ideas that would help you in any way, please feel free to give us a call or an email.

Deanna Morgan deannaeafa@gmail.com 206-940-9405

Jean Beuoy jeanprattbeuoy@yahoo.com 425-503-3733



Thank you to 4Culture and the City of Bellevue for your continuing support.

