



NOVEMBER 2018 NEWSLETTER

Table of Contents

Demonstrator for NOVEMBER
From Our President
Public Art Program
Critique Group

We meet at the **Westminster Chapel**
13646 NE 24th St - Bellevue, WA
Thursday, November 15th -- 1:30 pm

Artist Demonstrator for November is Angela Bandurka

ARTIST BIO

Angela was born in British Columbia, Canada, and comes from a multi-generational family of passionate artists. Her Grandmother was one of her most influential mentors, and helped shape Angela's future as a painter. Drawing and painting since she was a small child, Angela completed her first commissioned portrait at 15. After many years as a Graphic Artist and Art Director for companies like Costco, RealNetworks and Garrigan Lyman, Angela started painting and instructing full-time in 2008.

Her award-winning work has been exhibited in shows throughout North America. She is a Master Signature Member of the International Society of Acrylic Painters (ISAP), a member of the National Oil & Acrylic Painters' Society, Plein Air Washington Artists (PAWA), as well as the American Impressionists Society. Angela is currently represented by Cole Gallery in Edmonds, WA and the Lagerquist Gallery in Atlanta, GA.

ARTIST STATEMENT

Paintings are much more than simply a likeness, they are an opportunity to capture a moment. In my work, I try to capture a slice of everyday life, whether that's a cup of hot tea in Grandma's fine china, or a bystander appreciating the window displays downtown.

Whatever the subject matter, my first step is to achieve a good drawing. Value, light, and color are strong elements in all my work, with composition an important factor as well.

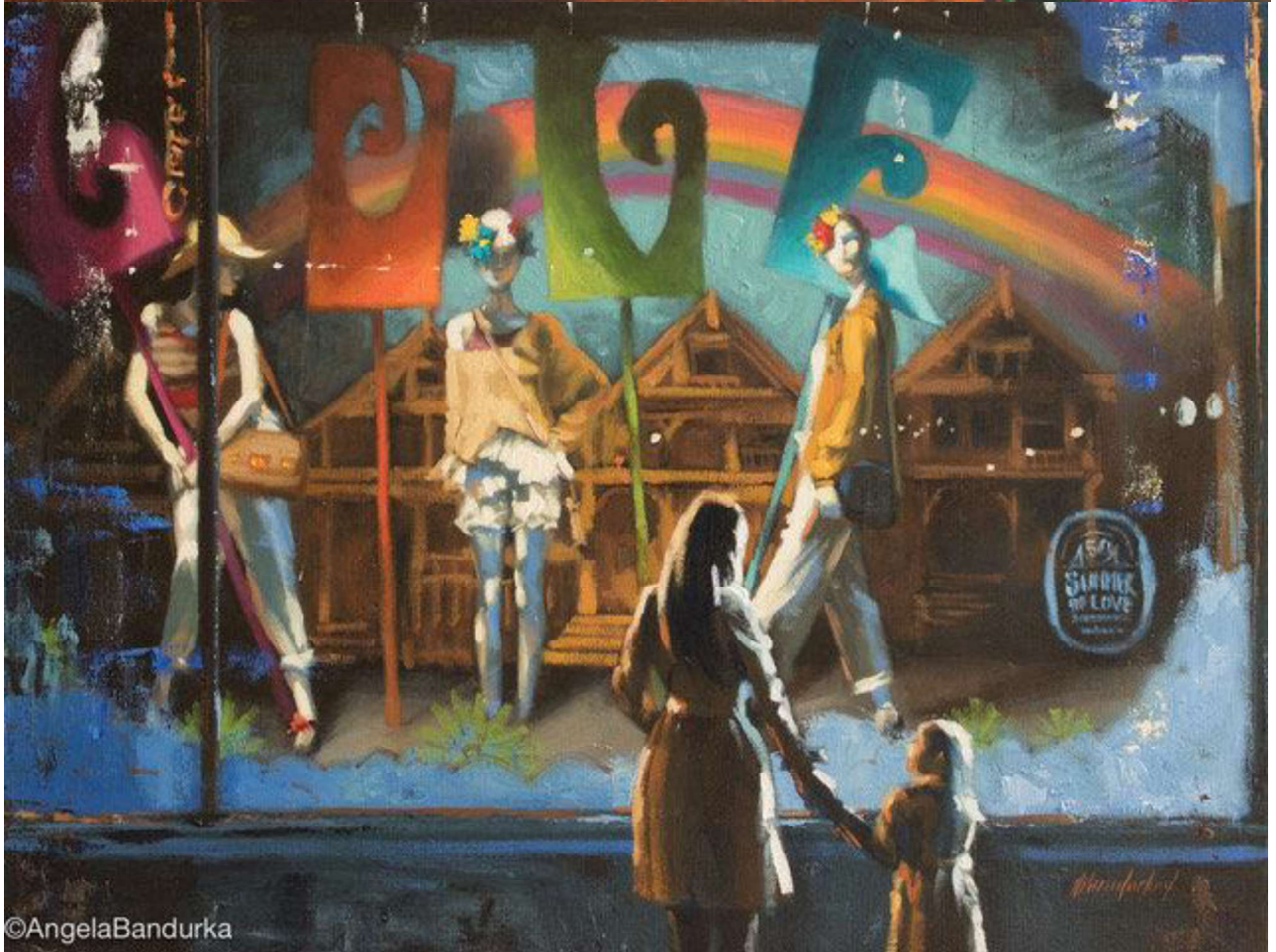
I try to paint the world as I see it, or as I would like to see it.



©AngelaBandurka



©AngelaBandurka



©AngelaBandurka

From Our President

Happy November, the month of giving thanks. Thanks to all of you, our EAFA family and friends for all of your loving support to keep our organization running so well.

You are the best!!!

OUR WONDERFUL SHARING TABLE

Don't forget to bring your newest piece of artwork to share. This is a perfect place for our members who are not quite ready to enter a juried show, who are maybe just a little shy about sharing, and just need a little push.

Also, if you have talents in other areas, this is the perfect place to let members know what else you create. Jewelry, pottery, crafts, etc.....

OPEN ART AT ST. LOUISE

Don't forget about the new opportunity to paint with friends on a given day, every week. EVERY Wednesday from 10:00 to 2.:00 . Just like Plein Air, but inside for comfort. St. Louise Church 141 156th Ave SE, Bellevue

NEWS FROM THE PUBLIC ART PROGRAM

A very special thank you to Elaine Mahler who has volunteered as a venue manager for a very long time. For special reasons, Elaine is giving up her duties at this time. If you have ever thought about being a venue manager, contact Laura Grover at bzak56@aol.com This position is very rewarding as you learn the art of hanging a show, you get to know different artists in our organization and you also get to visit with others at the different venues.

DECEMBER INFORMATION

There will be no December meeting as Christmas is too close to our regular meeting date. However, we will still have a December Newsletter to keep you all up to date for EAFA activities and news.

DUES WILL BE DUE JANUARY FIRST

This is just a friendly reminder that dues will be due on January 1 as our year runs from January 1 through December 31. Not to worry, I will send out another reminder closer to that special time.

KUDOS CORNER

Congratulations to Olga Bogar who sold a painting at Overlake Hospital.

Congratulations to Roger Baker who also sold a painting at Overlake Hospital.

Congratulations to Anne Waters who one "Best in Show" at the "Sip and Stroll" show at Molbaks, sponsored by the Woodinville Arts Alliance.

Elissa Adelson had three paintings accepted at the "Sip and Stroll" show and sold one of them. She entered the show because she heard about it through EAFA. Yeah!!!



Pictured above is Ann Reynolds and her Public Art display at Newcastle Library which will be up until January. Remember any art that sells thru this program is only subject to a 15% commission! EAFA's Public Art Program is the best deal ever for it's members!!!

EAFA Public Art Updates November 2018

The Public Art Program is a volunteer interest group within EAFA. The program provides appreciation and enjoyment of art to public and private audiences. It also gives opportunities to participating artists to exhibit and sell their artwork at several public and private venues including five sites at Overlake Hospital Medical Center, Bellevue Regional Library, Newcastle Library, Mercer Slough Environmental Center, Department of Ecology in Bellevue, North Bellevue Community Center, East Shore Unitarian Church and Café Cesura.

We have a new opening at the Department of Ecology for a co-manager and we are still in need of volunteers at Overlake Hospital. Volunteering as a Public Art Manager is a great opportunity to meet other artists and help EAFA be the number one place for artists. If anyone is interested in becoming an EAFA Public Art Manager please contact Laura Grover at bzak56@aol.com or phone: 425-753-4550.

Elaine Mahler and Sandra Michelle are taking a break from managing the Department of Ecology. Thank you Elaine and Sandra for everything you have done for the EAFA Public Art. Your efforts have been appreciated, enjoyed and we are looking forward to your future participation.

Bellevue Regional Library

Managers: Ann Reynolds and Mami Shimomura

November 3, to December 29, 2018

Roger Baker

Overlake Hospital Cardiology

Managers: Gayle Erxleben

August 19 to November 18, 2018

Roger Baker, Olga Bolgar, Heather Danso, Sheila Dufford, Gary Gillespie, Eve Worrell

November 18, to February 10, 2019

Pushpa Agrawal, Gail Baker, Kathy Berg, Joan Frey, Lyla Jacobsen, Phylis McDaniels,

Bev Birmele

Overlake Hospital Neonatal W2 Floor

Managers: Diana Grant

September 16 to December 16, 2018

Terry Smith

Overlake Oncology

Manager: Bev Birmele

September 16 to December 2, 2018

George Tuton, Georgianne Arnot, Ellen Grove

PACCAR Educational Center

**We Welcome, Lisa DeBaets as our new Overlake Hospital Public Art
Manager.**

September 30, to January 6, 2019

Joy Hagan, Dan Riley, Lewis LaBrashe', Jean Beuoy, Kristin Morris

Newcastle Library

Manager: Sharon Pfister

November 3, to December 1, 2018

Ann Reynolds

Overlake Hospital South Tower

Managers: Deb Freng and Roger Baker

September 30, to January 13, 2019

Shirley Rudolf, Beth Winn, Bilginer Bolukbasi

North Bellevue Community Center

Manager: Gill Mckinstry

October 3, to February 13, 2019

Ruth Russell, Ann Reynolds, Charles Fawcett, Beth Winn, Gill Mckinstry, Linda Harris,

Pushpa Agrawal, Dawn Dufford, Jean Beuoy

Mercer Slough Environmental Center

Manager: Cheryl Hoople

October 11, 2018 to January 10, 2019

Larey McDaniels

Department of Ecology

Managers: Laura Grover and Lisa DeBaets

October 4, to January 3, 2019

Carrie Ellison, Nilia Fajardo, Olga Bolgar, Lyla Jacobson, Lisa DeBaets

North Shore Unitarian Church

Managers: Laura Grover and Dawn Dufford

September 29, 2018 thru December 2018

Not an EAFA Public Art Show

The North Shore Unitarian Church invites us to their sponsored exhibit.

Cafe Cesura

Managers: Carrie Ellison

November 3, to December 1, 2018

Lisa Debaets

Critique Group

One of the biggest success stories for our meetings has been the Critique Group led by our Vice-President, Jean Beuoy. So bring your paintings for comments and suggestions or just sit in and learn from others.

As always, if you have any questions or suggestions to make EAFA better or ideas that would help you in any way, please feel free to give us a call or an email.

Deanna Morgan President deannaefafa@gmail.com 206-940-9405

Jean Beuoy jeanprattbeuoy@yahoo.com 425-503-3733



Thank you to [4Culture](#) and the [City of Bellevue](#) for your continuing support.



www.EAFA.org

Share Via: